

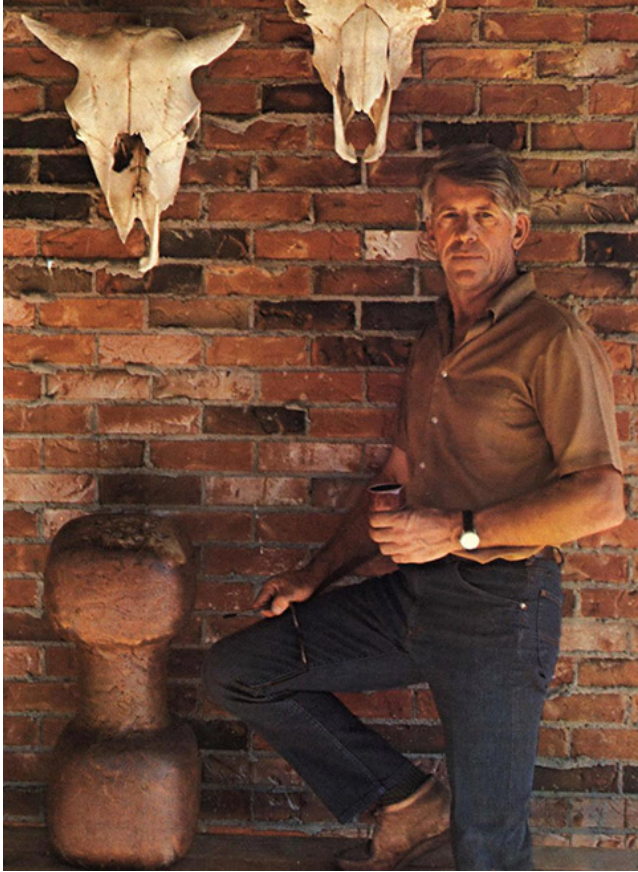


# Luke Lindoe

<https://rongetty.com/category/people/18>



**Celebrating Masters of Ceramic Craft**



Luke was the founder of Plainsman Clays in 1965. He was a well-known artist potter, teacher and sculptor of the time, having originally come out of the pottery production industry in the area. He was a leader in developing and understanding the geology and physics of clays in terms of use for pottery. He was a true "plains-man" - his domain was the "clay country" of the prairies.

Luke's methods contrasted with the industrial approach of relying on numbers on material data sheets, numbers having little to do with what a potter feels and fires with his own hands. Luke's techniques put within the reach of ordinary people the ability to find and characterize clays in a highly practical way. They even put potters into a place of better understanding of the physical properties of clays than many ceramic engineers.

As a geologist, Luke explored wide swaths of the prairies. Working with the research councils and universities in Alberta, Saskatchewan, Manitoba, Montana and Idaho he characterized a wide range of clays and shales useful for pottery, brick and tile. Only a few of the deposits he found were developed into quarries, but these yielded hundreds of thousands of tons of material used in production of many types of product. In fact, the suite of raw materials he developed for Plainsman Clays has lasted from the 1970s right up until the 2020s and should continue into the indefinite future!

Luke recognized that many of the clays in this area had a much lower melting point, low enough that they could function as glazes at stoneware temperatures (either pure or with a little help from feldspar). The work he did eventually led to the development of "Ravenscrag Slip", a natural glaze material now used across North America (and known around the world).

**Place:** Medicine Hat, AB

## About

